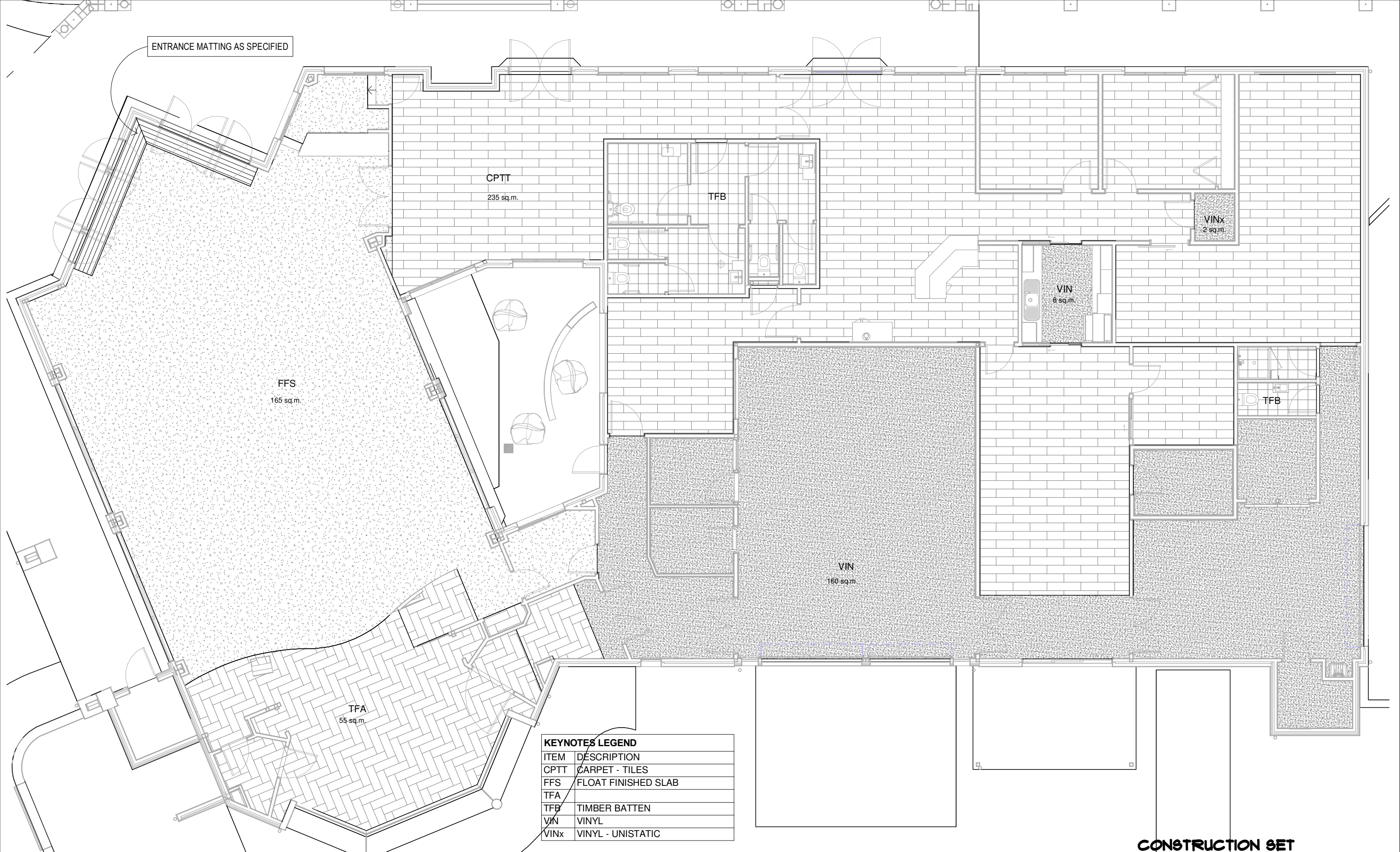


ENTRANCE MATTING AS SPECIFIED



KEYNOTES LEGEND

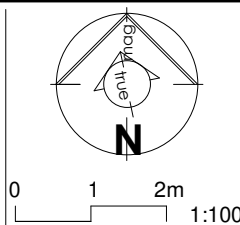
ITEM	DESCRIPTION
CPTT	CARPET - TILES
FFS	FLOAT FINISHED SLAB
TFA	
TFB	TIMBER BATTEN
VIN	VINYL
VINx	VINYL - UNISTATIC

CONSTRUCTION SET

Issue Date Issue Description Rev Date Revision Description



ARCHITECTS BLACK & WILSON Pty. Ltd.
 A.B.N. 28 069 941 868
 PH: (07) 3300 6610
 8 DESBET STREET, THE GAP, 4061
 www.architectsblackandwilson.com.au

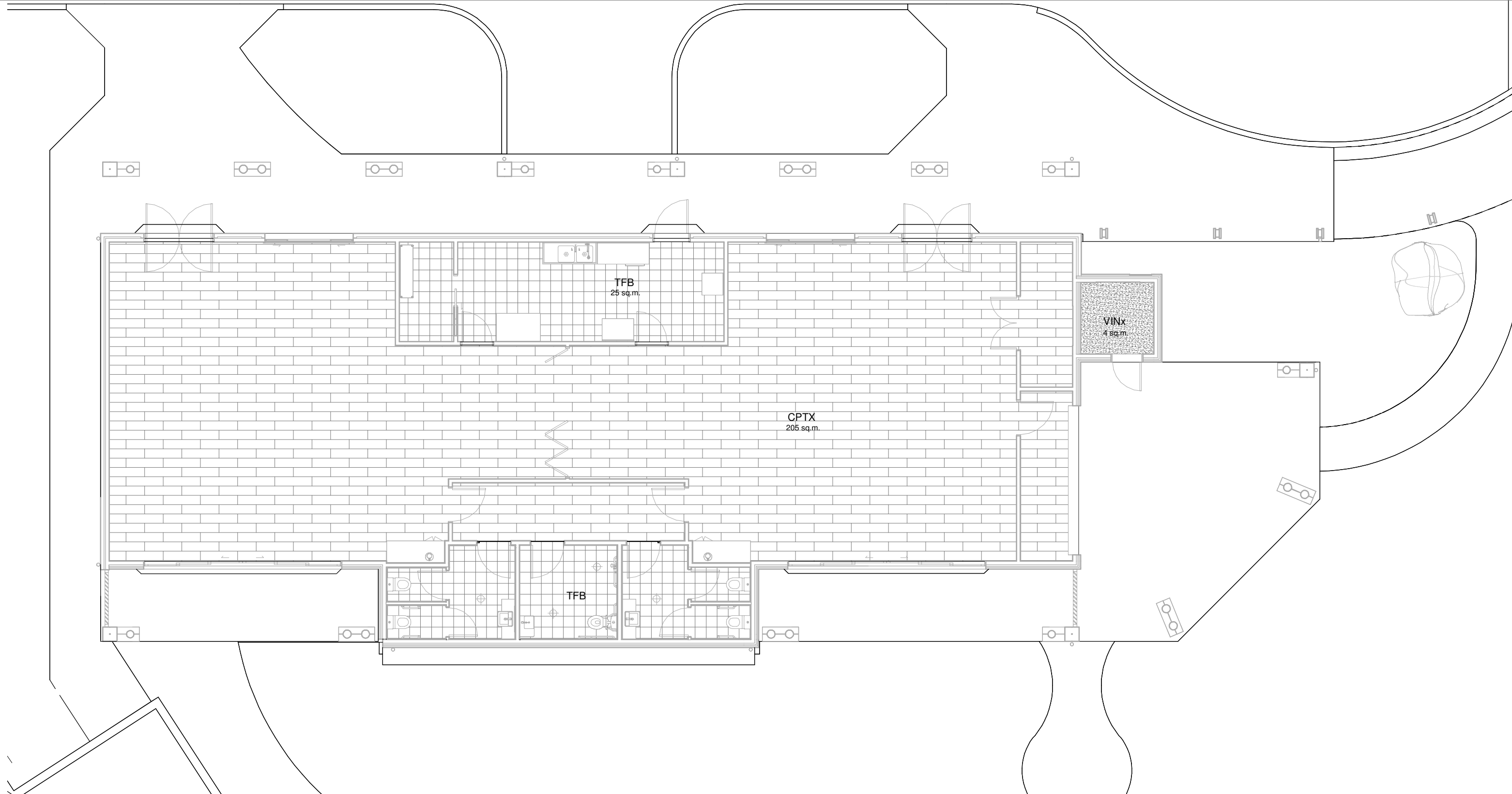


PROPOSED COMMUNITY PROJECT
 at 150 OCEANVIEW DRIVE SEASIDE
 for COMMUNITY PTY LTD

ADMINISTRATION FLOOR FINISHES
 WORKING DRAWINGS

Scale at A3
 1 : 100
 Designed MDW
 Drawn MDW
 Checked MDW

Job No #10722
 Dwg No 550FFI
 Issue WD32
 SHEET 80 OF 99



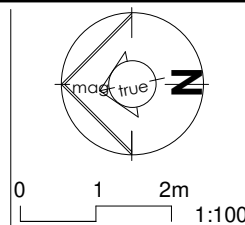
KEYNOTES LEGEND	
ITEM	DESCRIPTION
CPTX	CARPET - TILES INSULATED
TFB	TIMBER BATTEN
VINx	VINYL - UNISTATIC

CONSTRUCTION SET

Issue	Date	Issue Description	Rev	Date	Revision Description



ARCHITECTS BLACK & WILSON Pty. Ltd.
 A.B.N. 28 069 941 868
 PH: (07) 3300 6610
 8 DESBET STREET, THE GAP, 4061
 www.architectsblackandwilson.com.au



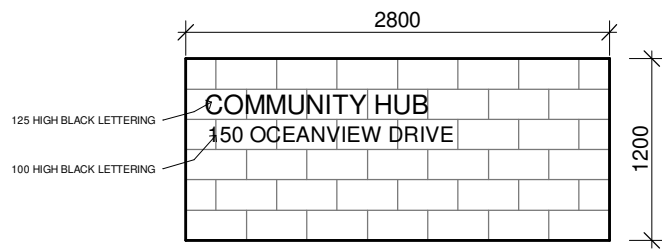
PROPOSED COMMUNITY PROJECT
 at 150 OCEANVIEW DRIVE SEASIDE
 for COMMUNITY PTY LTD

RECEPTION FLOOR FINISHES

WORKING DRAWINGS

Scale at A3
 1 : 100
 Designed MDW
 Drawn MDW
 Checked MDW

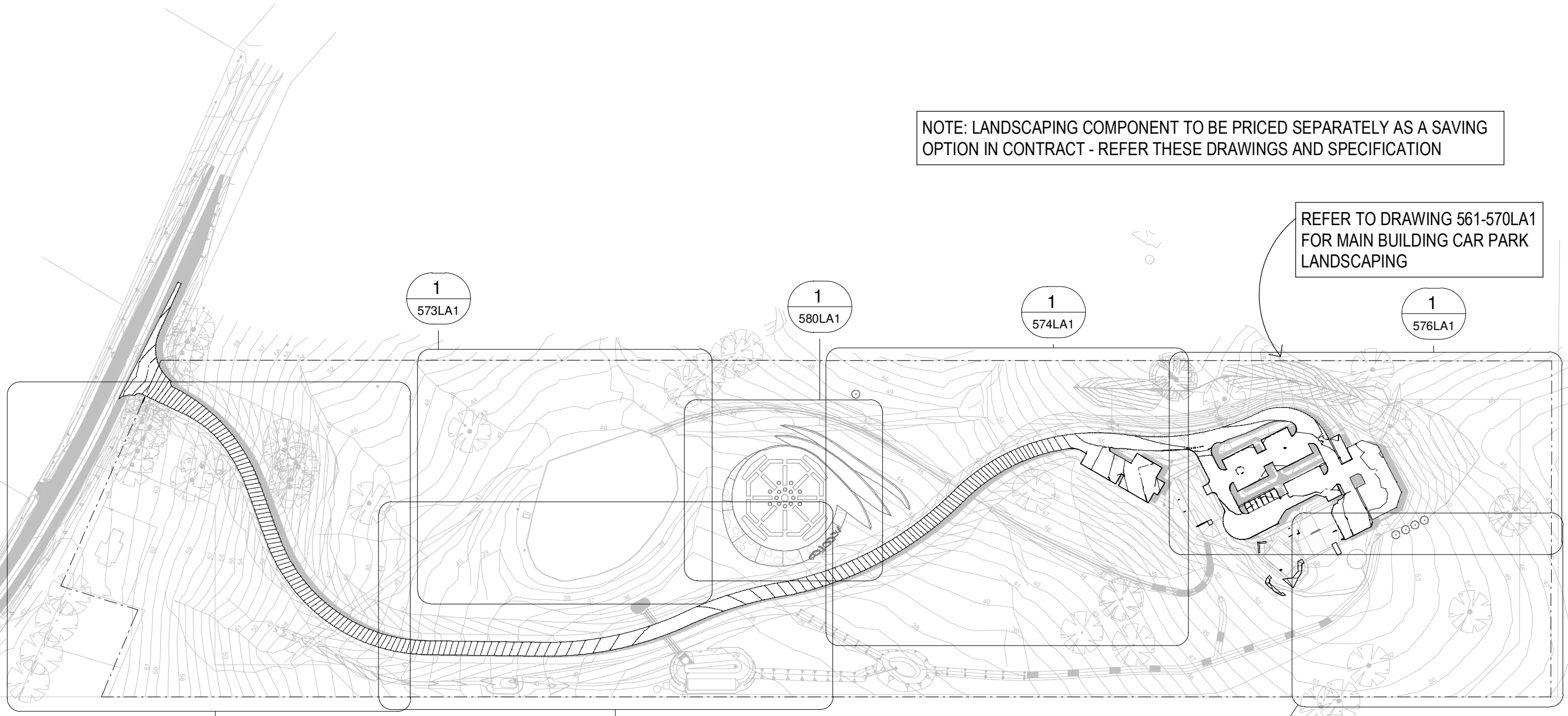
Job No #10122
 Dwg No 551FF1
 Issue WD32
 SHEET 01 OF 09



EE1 ENTRY WALL ELEVATION
1 : 50

NOTE: LANDSCAPING COMPONENT TO BE PRICED SEPARATELY AS A SAVING OPTION IN CONTRACT - REFER THESE DRAWINGS AND SPECIFICATION

REFER TO DRAWING 561-570LA1 FOR MAIN BUILDING CAR PARK LANDSCAPING

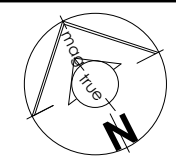


LANDSCAPE SITE PLAN
1 : 2000

CONSTRUCTION SET

Issue	Date	Issue Description	Rev	Date	Revision Description

ARCHITECTS BLACK & WILSON Pty. Ltd.
A.B.N. 28 069 941 868
PH: (07) 3300 6610
8 DESBET STREET, THE GAP, 4061
www.architectsblackandwilson.com.au

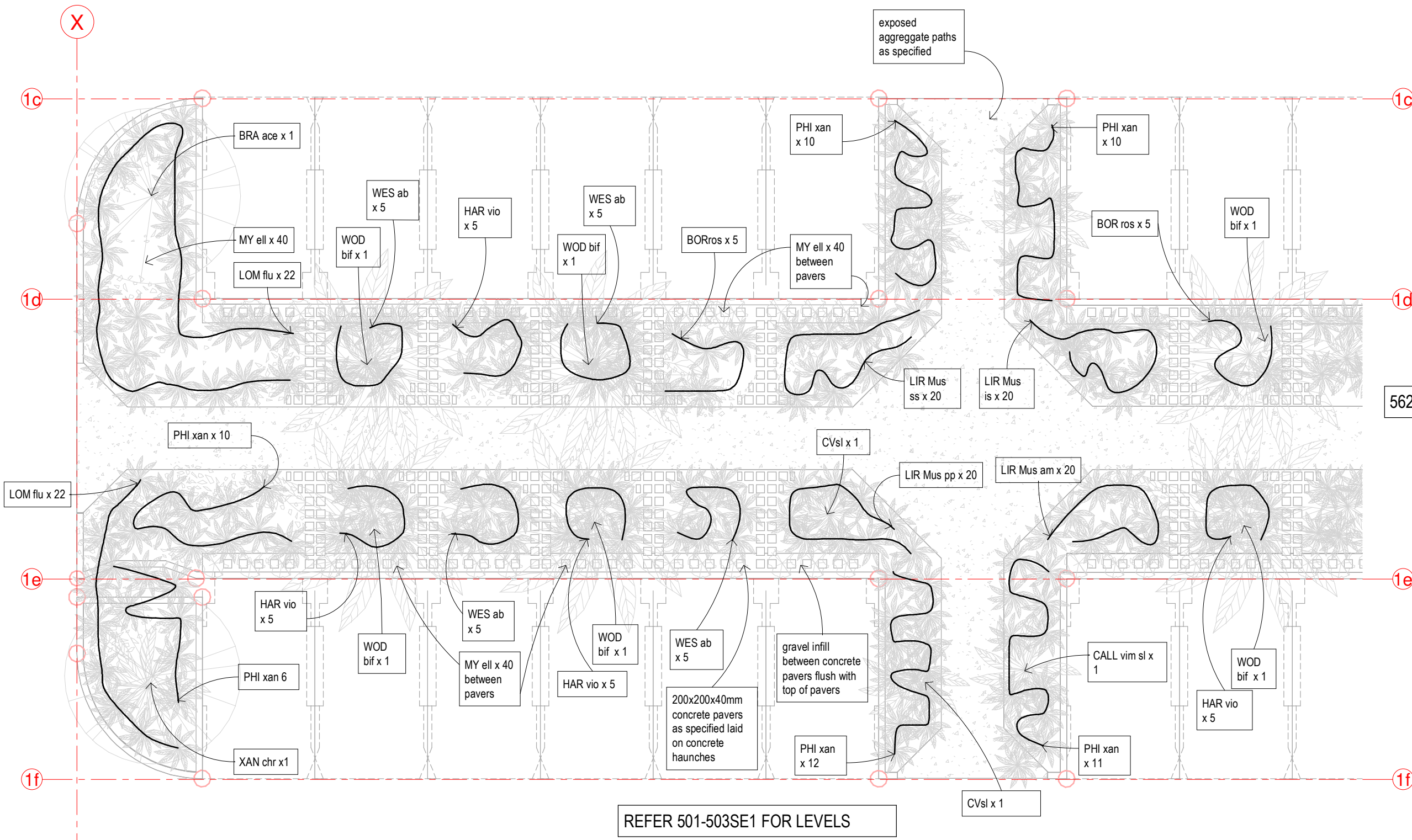


PROPOSED COMMUNITY PROJECT
at 150 OCEANVIEW DRIVE SEASIDE
for COMMUNITY PTY LTD

LANDSCAPE KEY PLAN
WORKING DRAWINGS

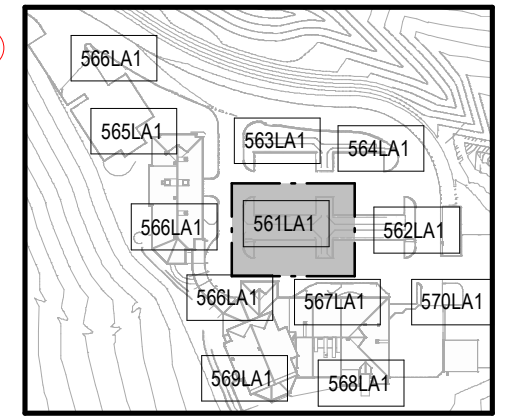
Scale at A3 AS INDICATED
Designed MDW
Drawn MDW
Checked MDW

Job No #10122
Dwg No 560LA1
Issue WD32
SHEET 02 OF 09



562LA1 ADJOINS

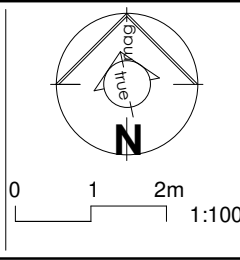
KEY PLAN



CAR PARK LANDSCAPING TO BE PRICED SEPARATELY AS A SAVING OPTION IN CONTRACT - REFER SPECIFICATION

CONSTRUCTION SET

Issue	Date	Issue Description	Rev	Date	Revision Description

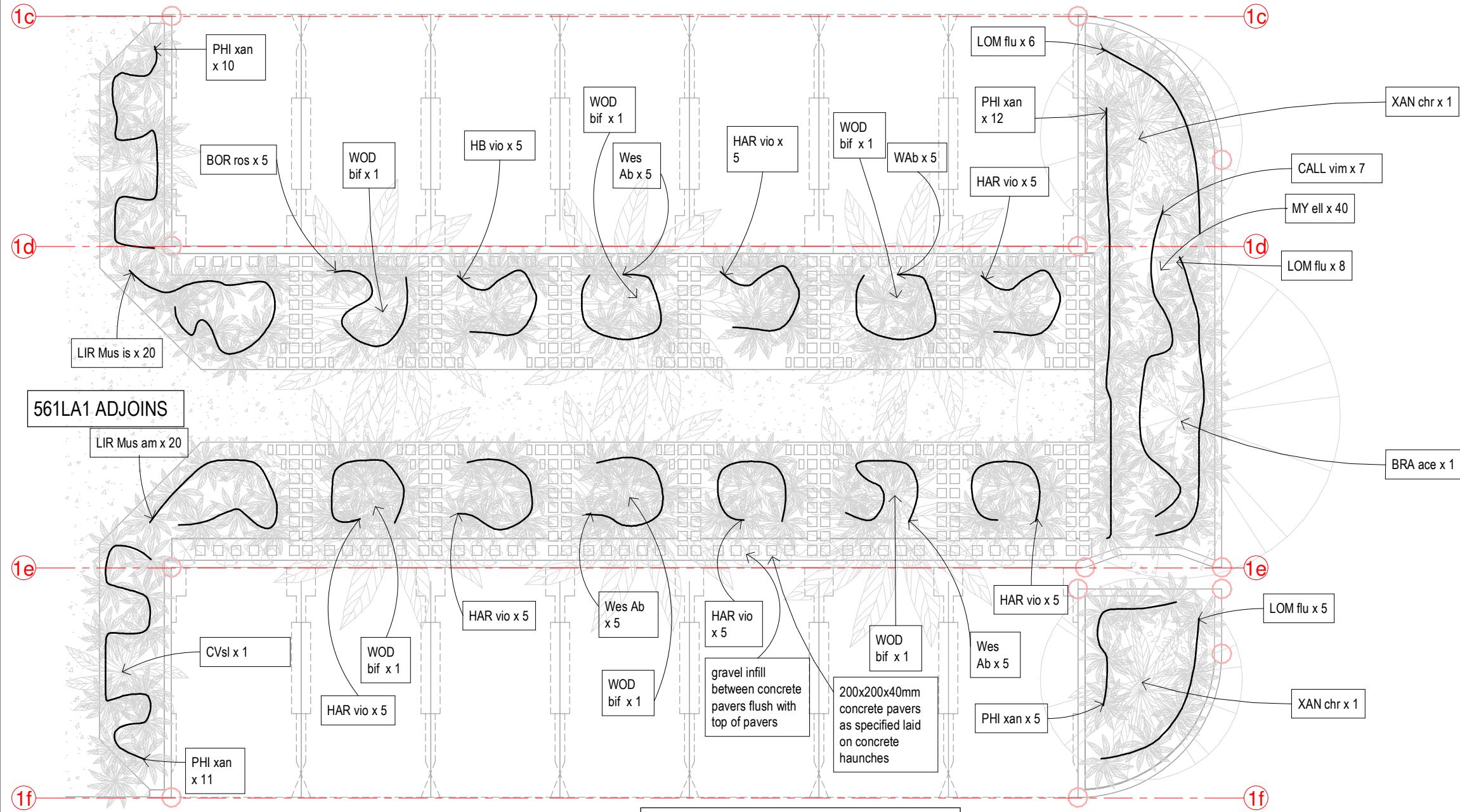
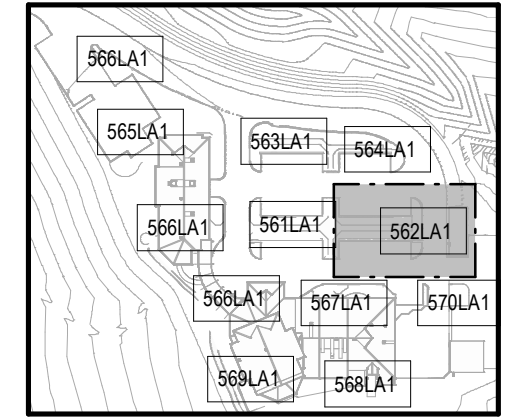


PROPOSED COMMUNITY PROJECT
 at 150 OCEANVIEW DRIVE SEASIDE
 for COMMUNITY PTY LTD

LANDSCAPE PUBLIC CAR PARK ZONE1
 WORKING DRAWINGS

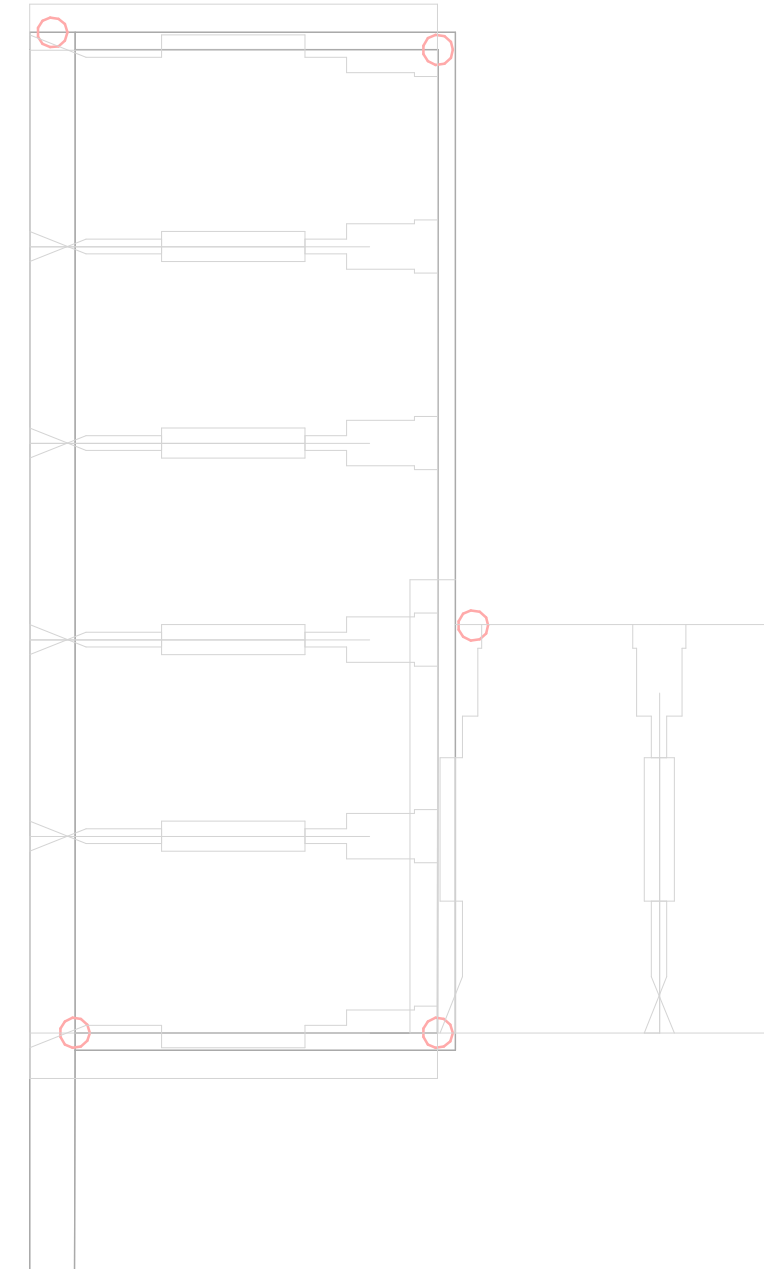
Scale at A3 AS INDICATED
 Designed MDW
 Drawn MDW
 Checked MDW
 Job No #10122
 Dwg No 561LA1
 Issue WD32
 SHEET 03 OF 09

KEY PLAN



REFER 501-503SE1 FOR LEVELS

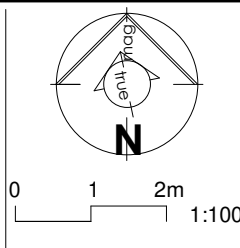
CAR PARK LANDSCAPING TO BE PRICED SEPARATELY AS A SAVING OPTION IN CONTRACT - REFER SPECIFICATION



CONSTRUCTION SET

Issue	Date	Issue Description	Rev	Date	Revision Description

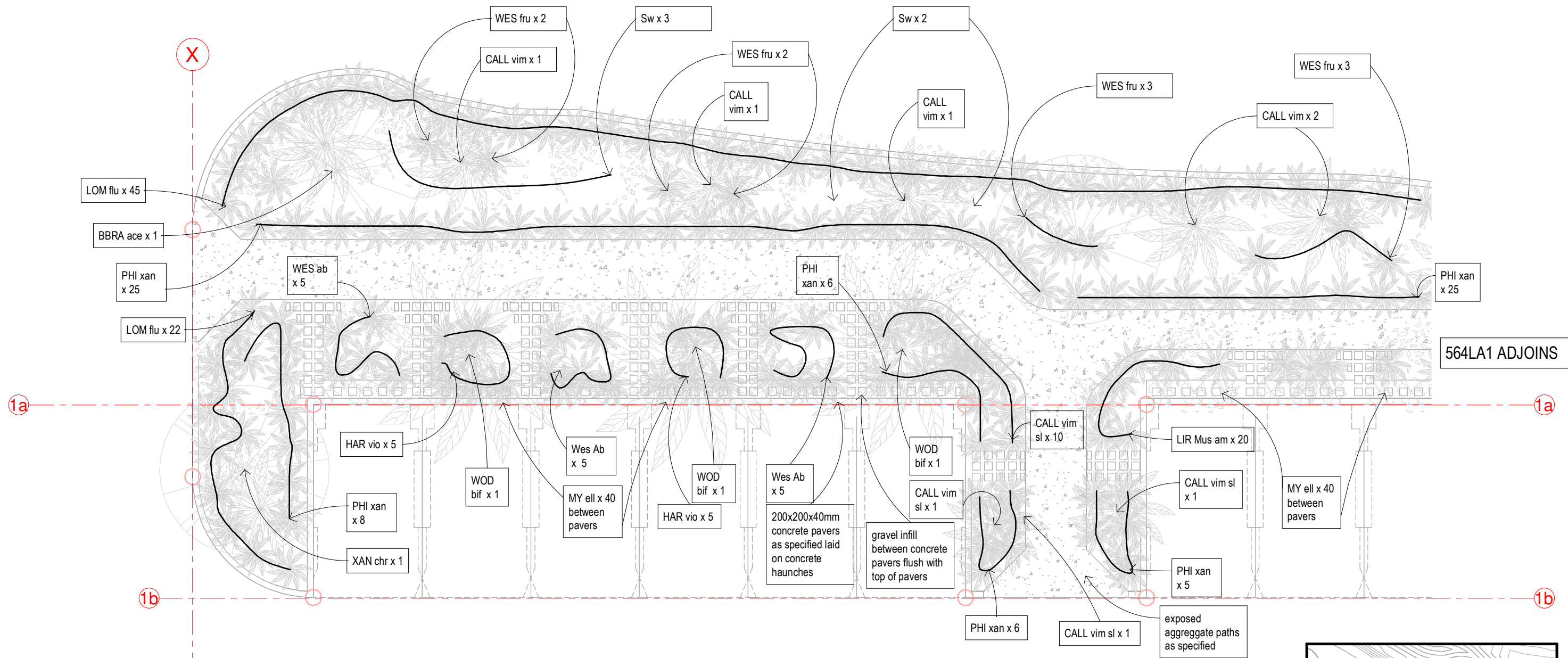
ARCHITECTS BLACK & WILSON Pty. Ltd.
 A.B.N. 28 069 941 868
 PH: (07) 3300 6610
 8 DESBET STREET, THE GAP, 4061
 www.architectsblackandwilson.com.au



PROPOSED COMMUNITY PROJECT
 at 150 OCEANVIEW DRIVE SEASIDE
 for COMMUNITY PTY LTD

LANDSCAPE PUBLIC CAR PARK ZONE 2
 WORKING DRAWINGS

Scale at A3 AS INDICATED
 Designed MDW
 Drawn MDW
 Checked MDW
 Job No #10122
 Dwg No 562LA1
 Issue WD32
 SHEET 04 OF 09



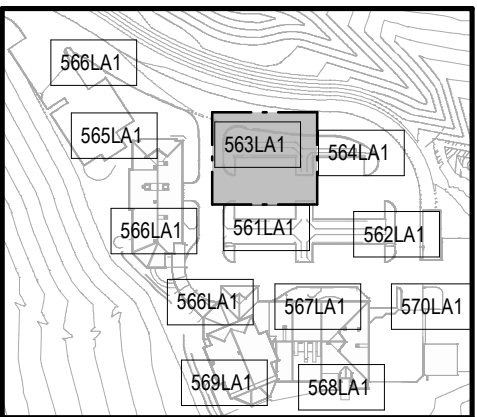
564LA1 ADJOINS

562LA1 ADJOINS

REFER 501-503SE1 FOR LEVELS

CAR PARK LANDSCAPING TO BE PRICED SEPARATELY AS A SAVING OPTION IN CONTRACT - REFER SPECIFICATION

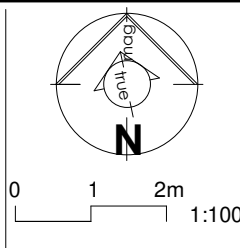
KEY PLAN



CONSTRUCTION SET

Issue	Date	Issue Description	Rev	Date	Revision Description

ARCHITECTS BLACK & WILSON Pty. Ltd.
 A.B.N. 28 069 941 868
 PH: (07) 3300 6610
 8 DESBET STREET, THE GAP, 4061
 www.architectsblackandwilson.com.au

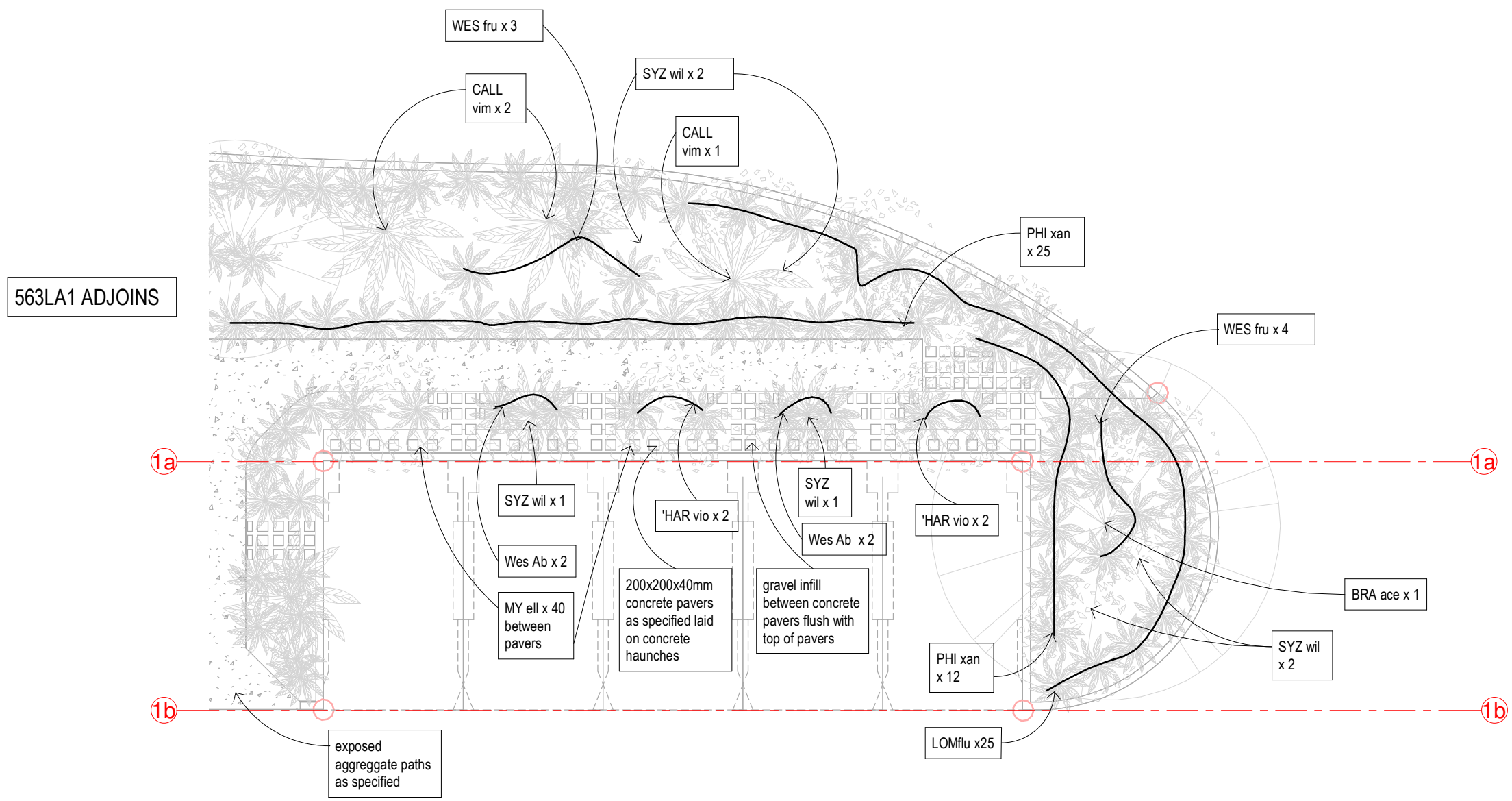
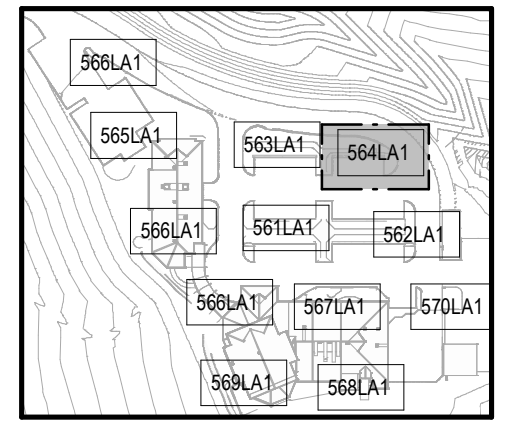


PROPOSED COMMUNITY PROJECT
 at 150 OCEANVIEW DRIVE SEASIDE
 for COMMUNITY PTY LTD

LANDSCAPE PUBLIC CAR PARK ZONE 3
 WORKING DRAWINGS

Scale at A3 AS INDICATED
 Designed MDW
 Drawn MDW
 Checked MDW
 Job No #10122
 Dwg No 563LA1
 Issue WD32
 SHEET 85 OF 89

KEY PLAN



563LA1 ADJOINS

562LA1 ADJOINS

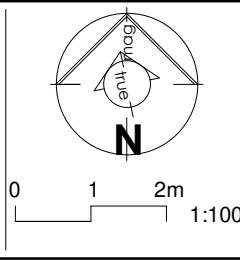
REFER 501-503SE1 FOR LEVELS

CAR PARK LANDSCAPING TO BE PRICED SEPARATELY AS A SAVING OPTION IN CONTRACT - REFER SPECIFICATION

CONSTRUCTION SET

Issue	Date	Issue Description	Rev	Date	Revision Description

ARCHITECTS BLACK & WILSON Pty. Ltd.
 A.B.N. 28 069 941 868
 PH: (07) 3300 6610
 8 DESBET STREET, THE GAP, 4061
 www.architectsblackandwilson.com.au



PROPOSED COMMUNITY PROJECT
 at 150 OCEANVIEW DRIVE SEASIDE
 for COMMUNITY PTY LTD

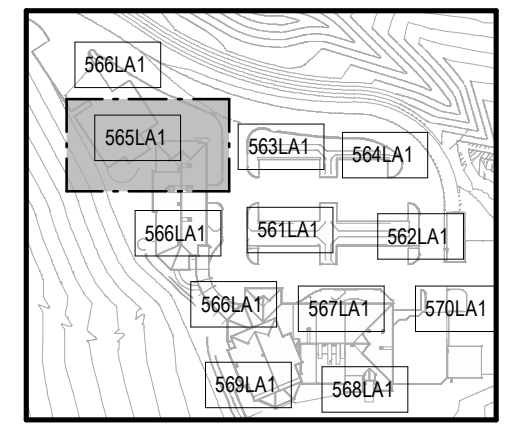
LANDSCAPE PUBLIC CAR PARK ZONE 4
 WORKING DRAWINGS

Scale at A3 AS INDICATED
 Designed MDW
 Drawn MDW
 Checked MDW

Job No #10122
 Dwg No 564LA1
 Issue WD32

SHEET 88 OF 99

KEY PLAN



566LA1 ADJOINS

CALL vim gj x 10

PHI xan x 35

CALL vim x 3

CUP ana x 2

THIS PLANTING BETWEEN NEW DRIVEWAY AND MAIN ROAD NOT IN CONTRACT - TO BE CARRIED OUT BY OWNER

THIS PLANTING BETWEEN NEW DRIVEWAY AND MAIN ROAD NOT IN CONTRACT - TO BE CARRIED OUT BY OWNER

REFER 501-503SE1 FOR LEVELS

exposed aggregate paths as specified

THIS PLANTING BETWEEN NEW DRIVEWAY AND MAIN ROAD NOT IN CONTRACT - TO BE CARRIED OUT BY OWNER

PH lp x 30
PH lp x 25

CALL vim x 4

566LA1 ADJOINS

PHI xan x 35

LOM flu x 35

LOM flu x 20

PH lp x 7

PHI xan x 20

PH lp x 30

CALL vim x 3

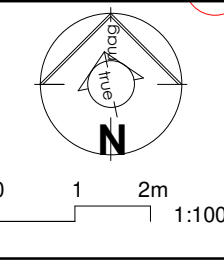
ALL THIS PLANTING ADJACENT FORCOURT IN CONTRACT

566LA1 ADJOINS

CONSTRUCTION SET

Issue	Date	Issue Description	Rev	Date	Revision Description

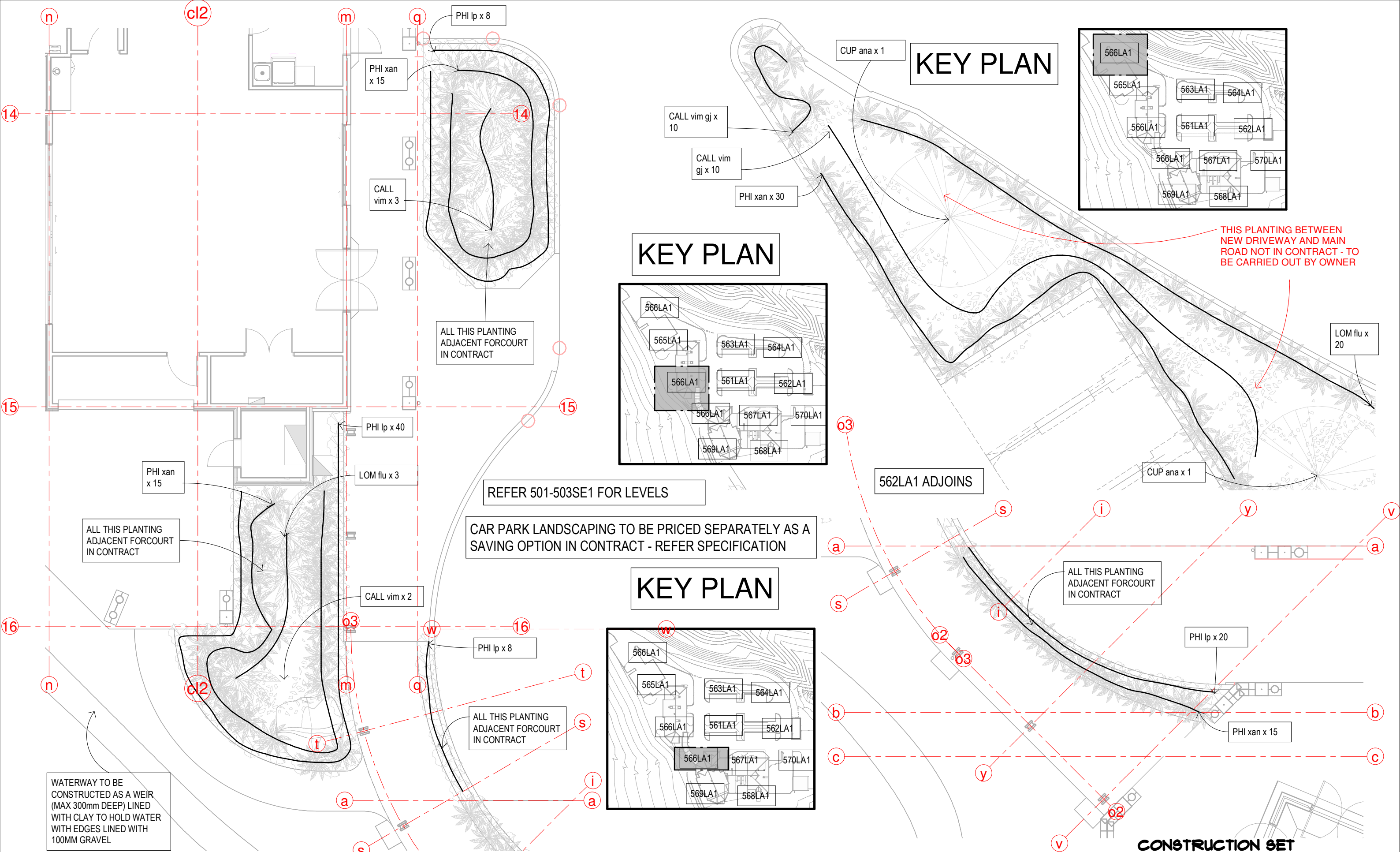
ARCHITECTS BLACK & WILSON Pty. Ltd.
 A.B.N. 28 069 941 868
 PH: (07) 3300 6610
 8 DESBET STREET, THE GAP, 4061
 www.architectsblackandwilson.com.au



PROPOSED COMMUNITY PROJECT
 at 150 OCEANVIEW DRIVE SEASIDE
 for COMMUNITY PTY LTD

LANDSCAPE PUBLIC CAR PARK ZONE 5
 WORKING DRAWINGS

Scale at A3 AS INDICATED
 Designed MDW
 Drawn MDW
 Checked MDW
 Job No #10122
 Dwg No 565LA1
 Issue WD32
SHEET 01 OF 09



REFER 501-503SE1 FOR LEVELS

CAR PARK LANDSCAPING TO BE PRICED SEPARATELY AS A SAVING OPTION IN CONTRACT - REFER SPECIFICATION

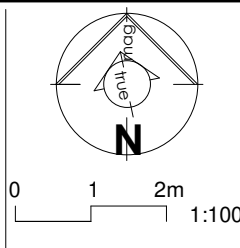
CONSTRUCTION SET

WATERWAY TO BE CONSTRUCTED AS A WEIR (MAX 300mm DEEP) LINED WITH CLAY TO HOLD WATER WITH EDGES LINED WITH 100MM GRAVEL

Issue	Date	Issue Description	Rev	Date	Revision Description



ARCHITECTS BLACK & WILSON Pty. Ltd.
 A.B.N. 28 069 941 868
 PH: (07) 3300 6610
 8 DESBET STREET, THE GAP, 4061
 www.architectsblackandwilson.com.au



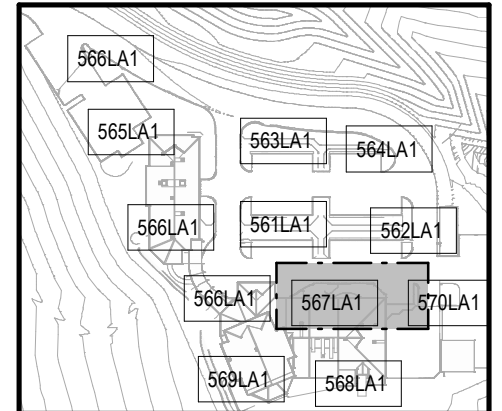
PROPOSED COMMUNITY PROJECT
 at 150 OCEANVIEW DRIVE SEASIDE
 for COMMUNITY PTY LTD

LANDSCAPE PUBLIC CAR PARK ZONE 6
 WORKING DRAWINGS

Scale at A3 AS INDICATED
 Designed MDW
 Drawn MDW
 Checked MDW

Job No #10122
 Dwg No 566LA1
 Issue WD32
 SHEET 08 OF 09

KEY PLAN

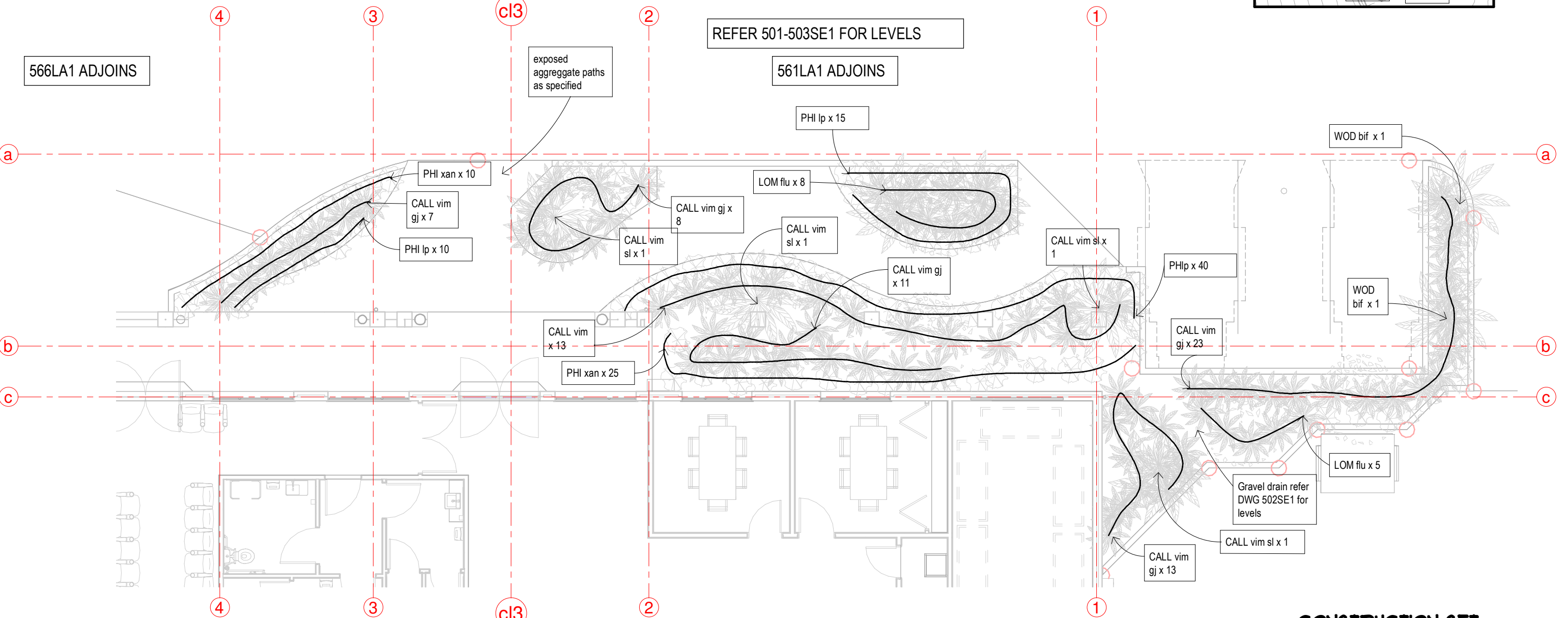


CAR PARK LANDSCAPING TO BE PRICED SEPARATELY AS A SAVING OPTION IN CONTRACT - REFER SPECIFICATION

REFER 501-503SE1 FOR LEVELS

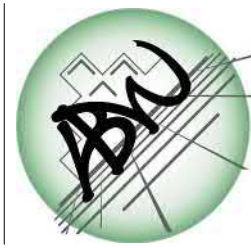
566LA1 ADJOINS

561LA1 ADJOINS

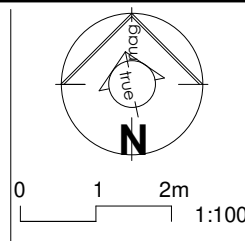


CONSTRUCTION SET

Issue	Date	Issue Description	Rev	Date	Revision Description



ARCHITECTS BLACK & WILSON Pty. Ltd.
 A.B.N. 28 069 941 868
 PH: (07) 3300 6610
 8 DESBET STREET, THE GAP, 4061
 www.architectsblackandwilson.com.au

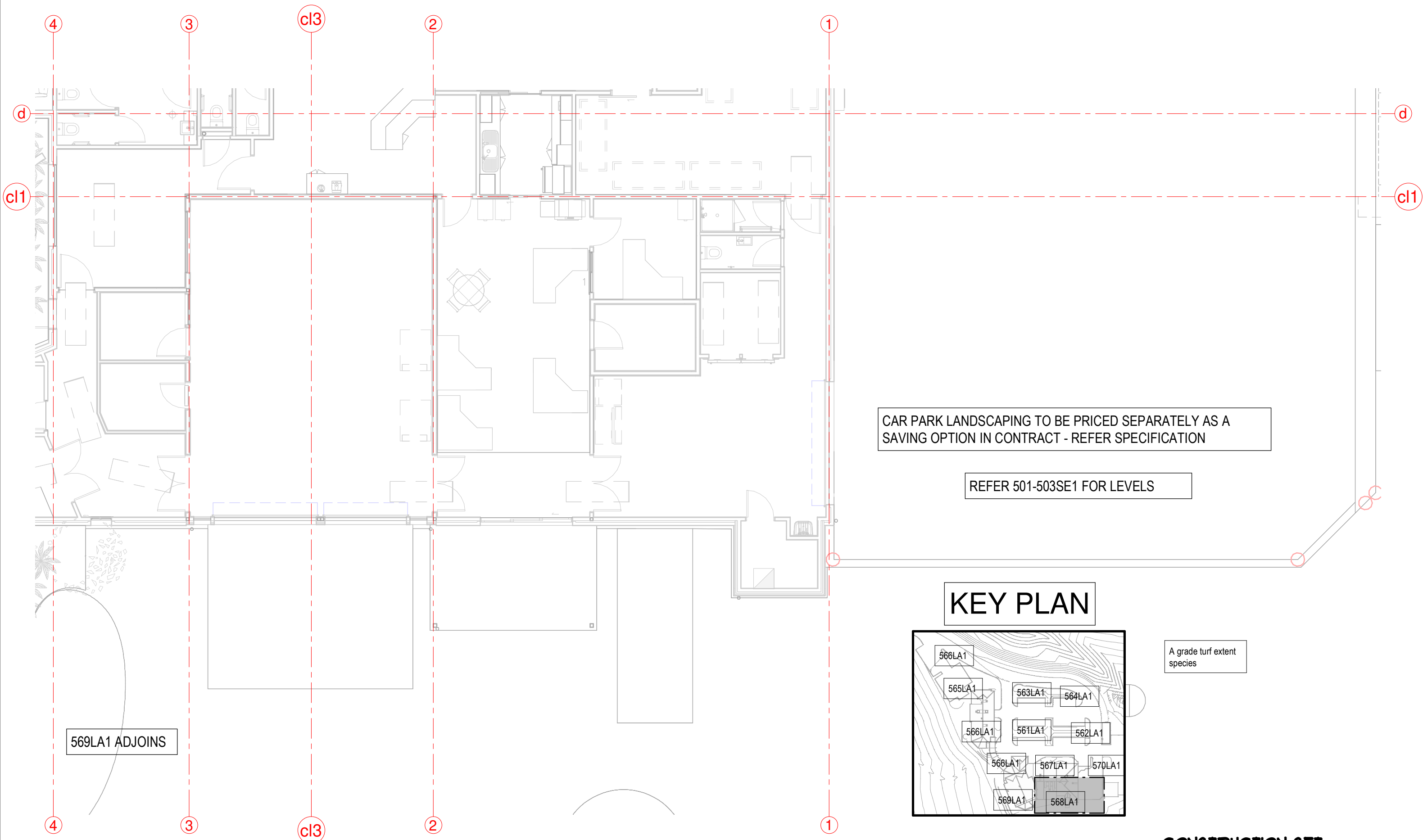


PROPOSED COMMUNITY PROJECT
 at 150 OCEANVIEW DRIVE SEASIDE
 for COMMUNITY PTY LTD

LANDSCAPE PUBLIC CAR PARK ZONE 1
 WORKING DRAWINGS

Scale at A3 AS INDICATED
 Designed MDW
 Drawn MDW
 Checked MDW

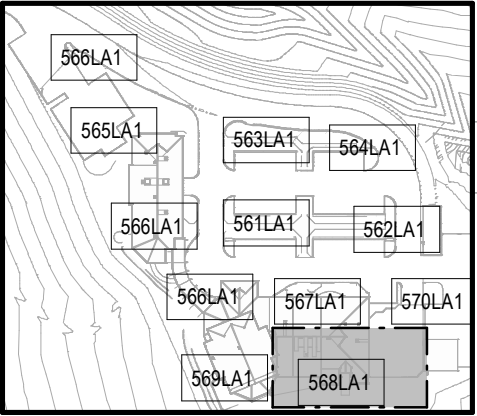
Job No #10122
 Dwg No 567LA1
 Issue WD32
 SHEET 03 OF 09



CAR PARK LANDSCAPING TO BE PRICED SEPARATELY AS A SAVING OPTION IN CONTRACT - REFER SPECIFICATION

REFER 501-503SE1 FOR LEVELS

KEY PLAN



A grade turf extent species

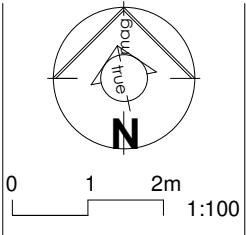
569LA1 ADJOINS

CONSTRUCTION SET

Issue	Date	Issue Description	Rev	Date	Revision Description



ARCHITECTS BLACK & WILSON Pty. Ltd.
 A.B.N. 28 069 941 868
 PH: (07) 3300 6610
 8 DESBET STREET, THE GAP, 4061
 www.architectsblackandwilson.com.au

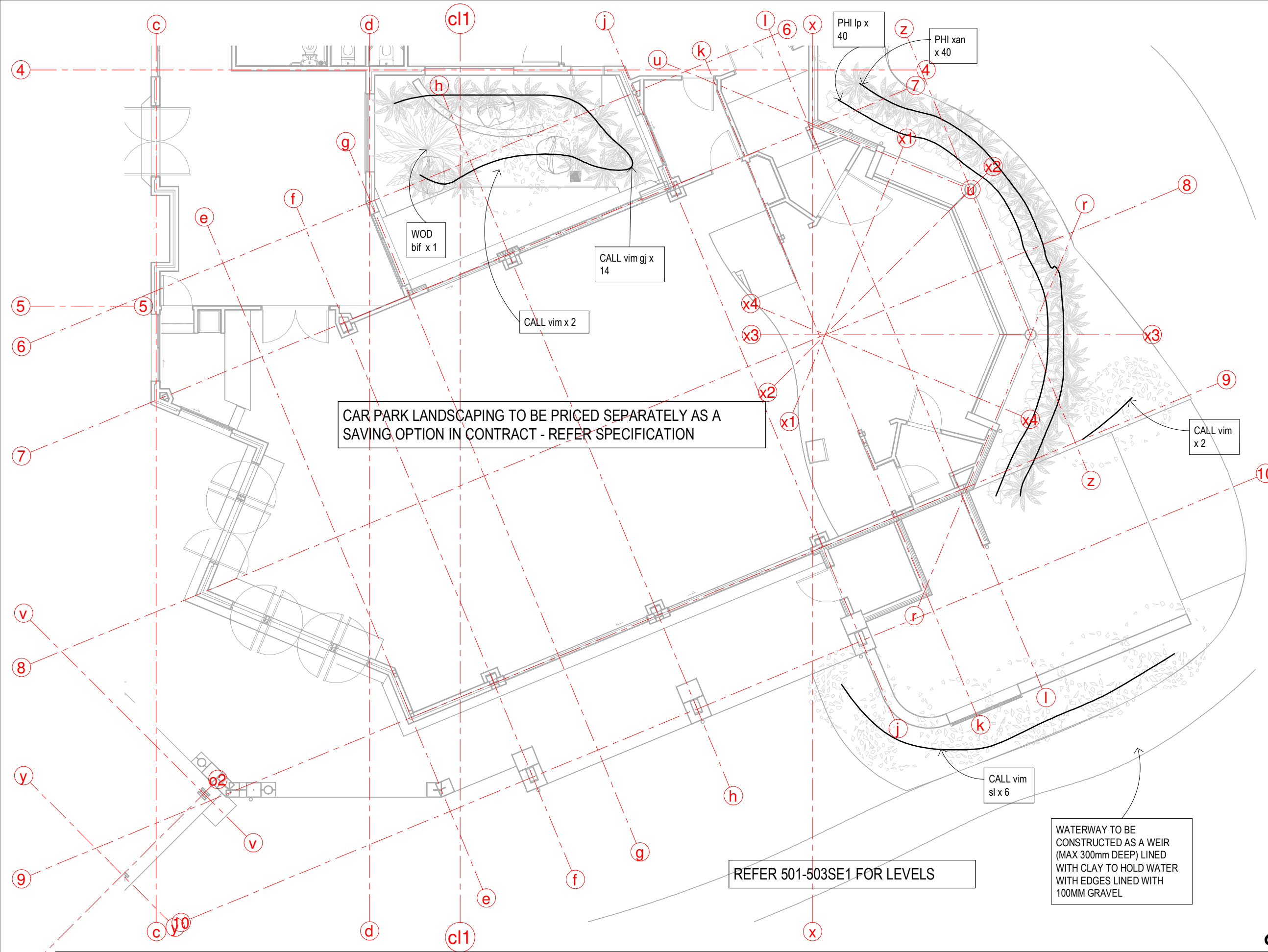


PROPOSED COMMUNITY PROJECT
 at 150 OCEANVIEW DRIVE SEASIDE
 for COMMUNITY PTY LTD

LANDSCAPE PRIVATE CAR PARK ZONE 8
 WORKING DRAWINGS

Scale at A3 AS INDICATED
 Designed MDW
 Drawn MDW
 Checked MDW

Job No #10122
 Dwg No 568LA1
 Issue WD32
 SHEET 30 OF 33

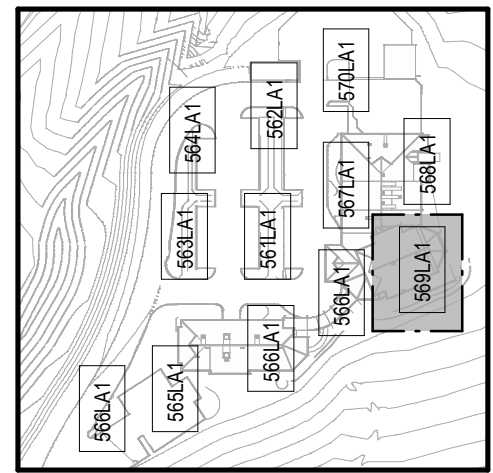


CAR PARK LANDSCAPING TO BE PRICED SEPARATELY AS A SAVING OPTION IN CONTRACT - REFER SPECIFICATION

REFER 501-503SE1 FOR LEVELS

WATERWAY TO BE CONSTRUCTED AS A WEIR (MAX 300mm DEEP) LINED WITH CLAY TO HOLD WATER WITH EDGES LINED WITH 100MM GRAVEL

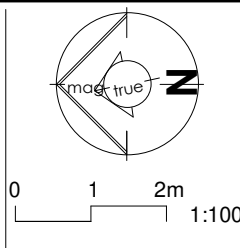
KEY PLAN



CONSTRUCTION SET

Issue	Date	Issue Description	Rev	Date	Revision Description

ARCHITECTS BLACK & WILSON Pty. Ltd.
 A.B.N. 28 069 941 868
 PH: (07) 3300 6610
 8 DESBET STREET, THE GAP, 4061
 www.architectsblackandwilson.com.au

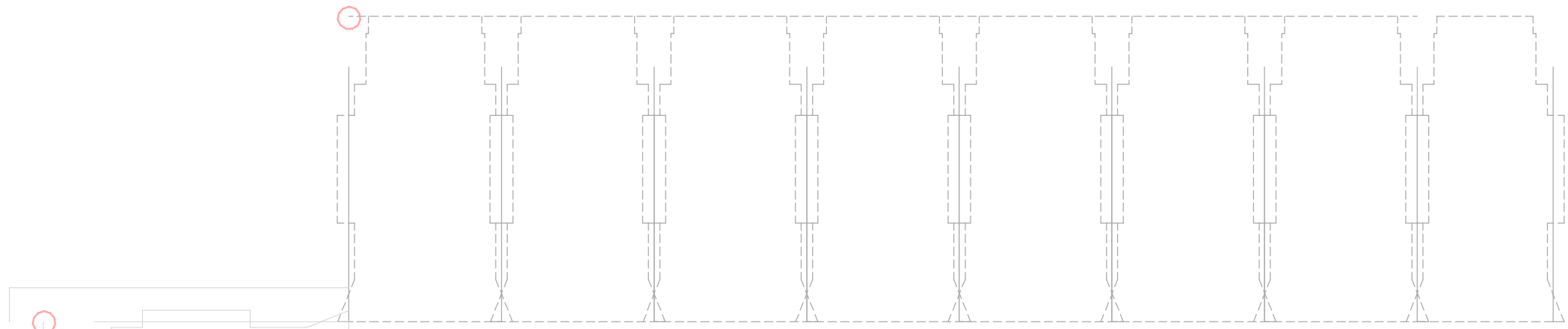
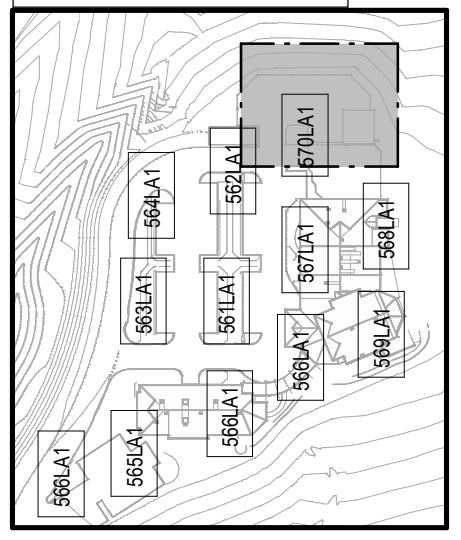


PROPOSED COMMUNITY PROJECT
 at 150 OCEANVIEW DRIVE SEASIDE
 for COMMUNITY PTY LTD

LANDSCAPE PUBLIC CHAPEL COURT ZONE 9
 WORKING DRAWINGS

Scale at A3 AS INDICATED
 Designed MDW
 Drawn MDW
 Checked MDW
 Job No #10122
 Dwg No 569LAI
 Issue WD32
 SHEET 91 OF 99

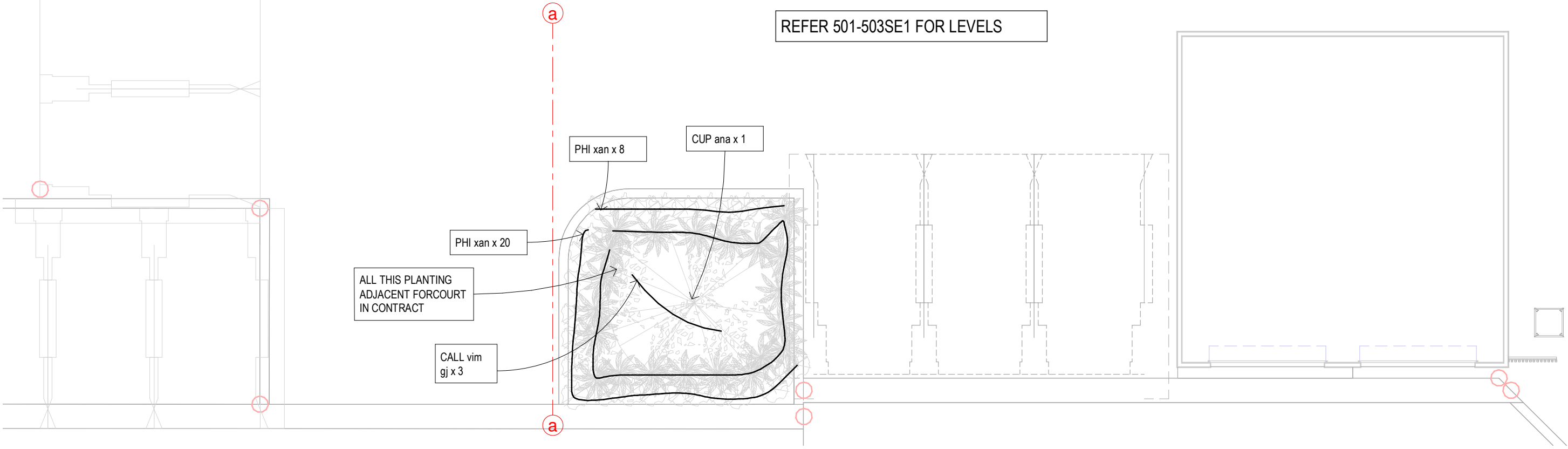
KEY PLAN



CAR PARK LANDSCAPING TO BE PRICED SEPARATELY AS A SAVING OPTION IN CONTRACT - REFER SPECIFICATION

REFER 501-503SE1 FOR LEVELS

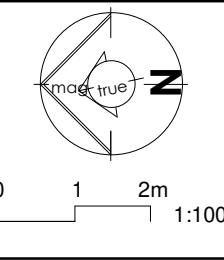
568LA1 ADJOINS



CONSTRUCTION SET

Issue	Date	Issue Description	Rev	Date	Revision Description

ARCHITECTS BLACK & WILSON Pty. Ltd.
 A.B.N. 28 069 941 868
 PH: (07) 3300 6610
 8 DESBET STREET, THE GAP, 4061
 www.architectsblackandwilson.com.au



PROPOSED COMMUNITY PROJECT
 at 150 OCEANVIEW DRIVE SEASIDE
 for COMMUNITY PTY LTD

LANDSCAPE PUBLIC CAR PARK ZONE 10
 WORKING DRAWINGS

Scale at A3 AS INDICATED
 Designed MDW
 Drawn MDW
 Checked MDW
 Job No #10122
 Dwg No 510LA1
 Issue WD32
 SHEET 02 OF 09

190 MASONRY WALL
1200 HIGH ENTRY
WITH SIGNAGE

EE1
560LA1

FOR TREES TO BE
REMOVED REFER
TREE SCIENCE TREE
AND VEGETATION
MANAGEMENT PLAN

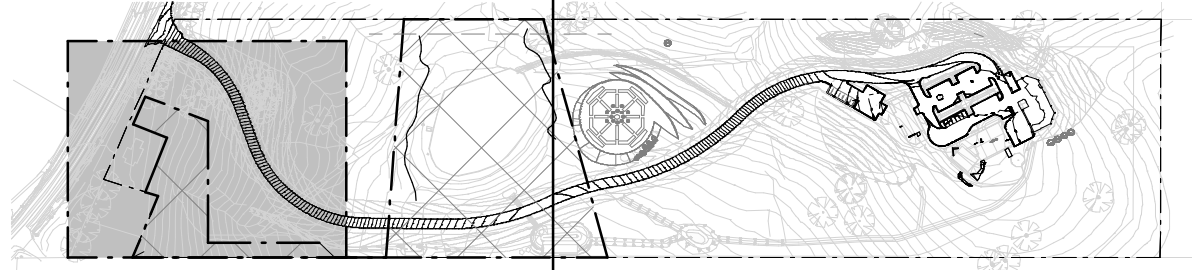
FOR TREES TO BE
REMOVED REFER
TREE SCIENCE TREE
AND VEGETATION
MANAGEMENT PLAN

FOR TREES TO BE
RETAINED REFER
TREE SCIENCE TREE
AND VEGETATION
MANAGEMENT PLAN

AVENUE PLANTING
SAVING OPTION IN
CONTRACT - REFER
SPECIFICATION

THIS PLANTING BETWEEN
NEW DRIVEWAY AND MAIN
ROAD NOT IN CONTRACT - TO
BE CARRIED OUT BY OWNER

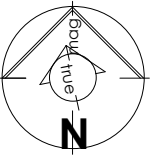
HATCHED AREA RPS
HABITAT ENHANCEMENT
LINK TO BE PLANTED AT 1
TREE/200 SQ.M. AS
SCHEDULED - THIS WORK
IS NOT REQUIRED AS
PART OF THE CONTRACT -
TO BE CARRIED OUT BY
OWNER



KEY PLAN

FOR LANDSCAPING PLANTING SCHEDULE
REFER DRAWING 030GG1

- Ci Corymbia intermedia 6
- Etr Eucalyptus tetracornis
- Ere Eucalyptus reinfera
- Lco Lophostemon confertus
- Lsa Lophostemon suaveolens
- Xc Xanthostomon chrythanthus



Issue	Date	Issue Description

Scale at A3
A6
INDICATED
Designed
DESIGNER

Drawn
AUTHOR

Checked
CHECKER

Rev	Date	Revision Description



**ARCHITECTS BLACK
& WILSON Pty. Ltd.**

A.B.N. 28 069 941 868
PH: (07) 3300 6610
8 DESBET STREET, THE GAP, 4061
www.architectsblackandwilson.com.au

PROPOSED COMMUNITY PROJECT

at 150 OCEANVIEW DRIVE
SEASIDE

for COMMUNITY PTY LTD

LANDSCAPE ENTRY

WORKING DRAWINGS

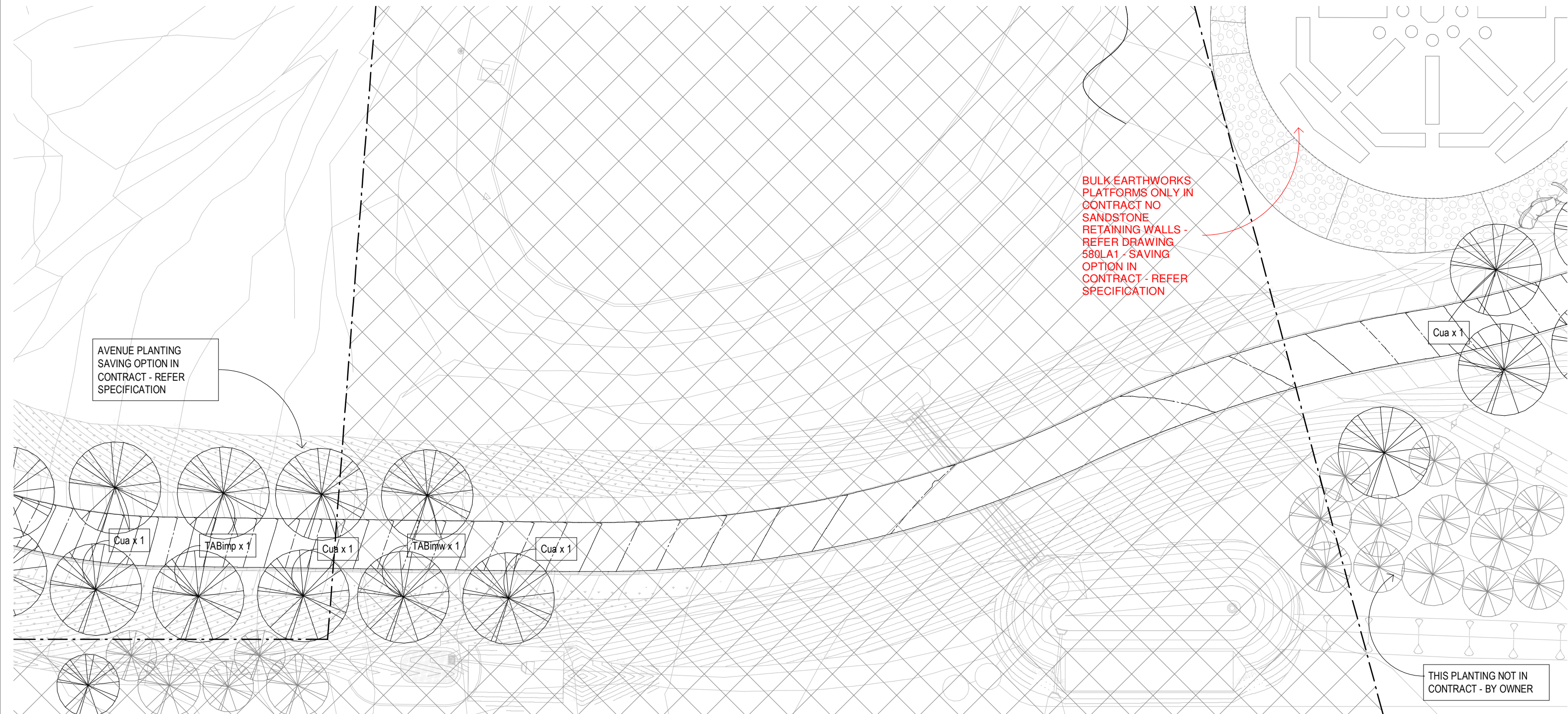
Job No
#10122

Dwg No
571LA1

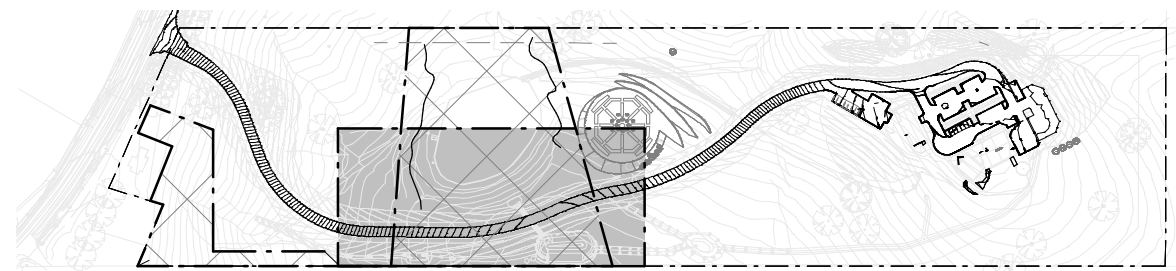
Issue
WD32

SHEET 93 OF 99

CONSTRUCTION SET



KEY PLAN



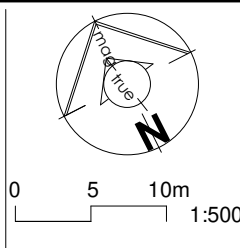
- Ci Corymbia intermedia 6
- Etr Eucalyptus tetracornis
- Ere Eucalyptus reinfera
- Lco Lophostemon confertus
- Lsa Lophostemon suaveolens
- Xc Xanthostomon chrythanthus

FOR LANDSCAPING PLANTING SCHEDULE
REFER DRAWING 030GG1

CONSTRUCTION SET

Issue	Date	Issue Description	Rev	Date	Revision Description

ARCHITECTS BLACK & WILSON Pty. Ltd.
 A.B.N. 28 069 941 868
 PH: (07) 3300 6610
 8 DESBET STREET, THE GAP, 4061
 www.architectsblackandwilson.com.au

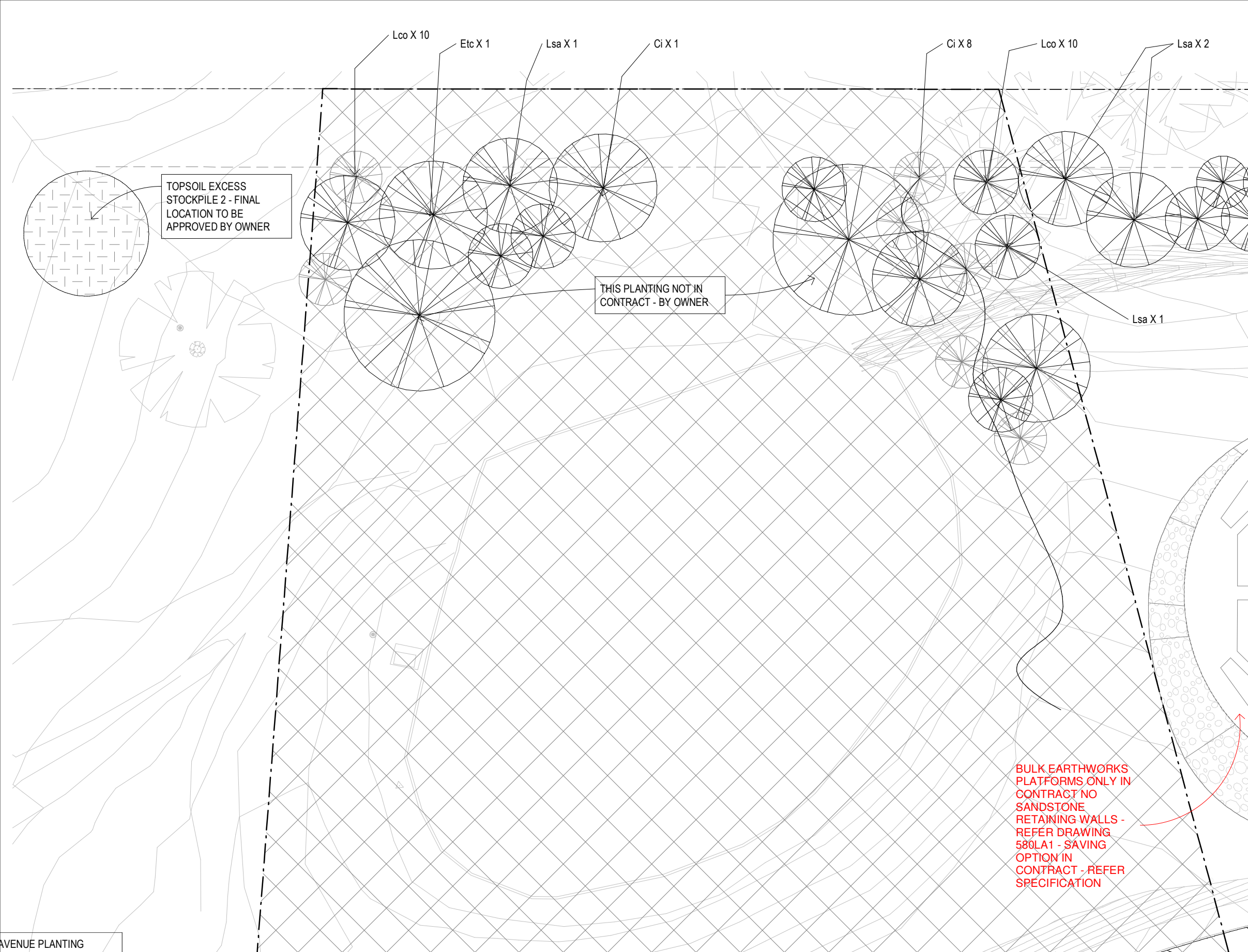


PROPOSED COMMUNITY PROJECT
 at 150 OCEANVIEW DRIVE SEASIDE
 for COMMUNITY PTY LTD

LANDSCAPE ENHANCEMENT DAM SOUTH
 WORKING DRAWINGS

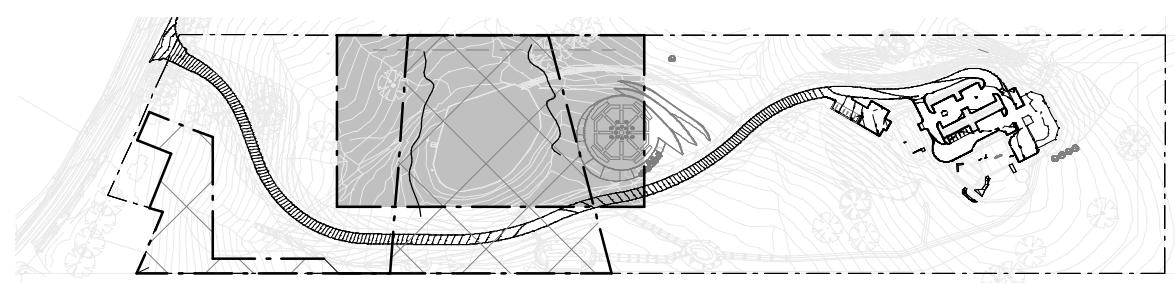
Scale at A3 AS INDICATED
 Designed MDW
 Drawn MDW
 Checked MDW

Job No **#10122**
 Dwg No **512LA2**
 Issue **WD32**
SHEET 04 OF 09



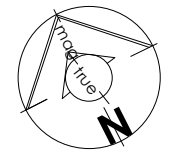
AVENUE PLANTING
SAVING OPTION IN
CONTRACT - REFER
SPECIFICATION

- Ci Corymbia intermedia 6
- Etr Eucalyptus tetracornis
- Ere Eucalyptus reinfera
- Lco Lophostemon confertus
- Lsa Lophostemon suaveolens
- Xc Xanthostomon chrythanthus



CONSTRUCTION SET

Landscape Notes - General



Issue	Date	Issue Description

Rev	Date	Revision Description

Scale at A3
A6
INDICATED
Designed
DESIGNER

Drawn
AUTHOR

Checked
CHECKER



**ARCHITECTS BLACK
& WILSON Pty. Ltd.**
A.B.N. 28 069 941 868
PH: (07) 3300 6610
8 DESBET STREET, THE GAP, 4061
www.architectsblackandwilson.com.au

**PROPOSED COMMUNITY
PROJECT**

at 150 OCEANVIEW DRIVE
SEASIDE
for COMMUNITY PTY LTD

**LANDSCAPE
ENHANCEMENT DAM
NORTH**

WORKING DRAWINGS

Job No
#10122

Dwg No
513LA1

Issue
WD32

SHEET 95 OF 99

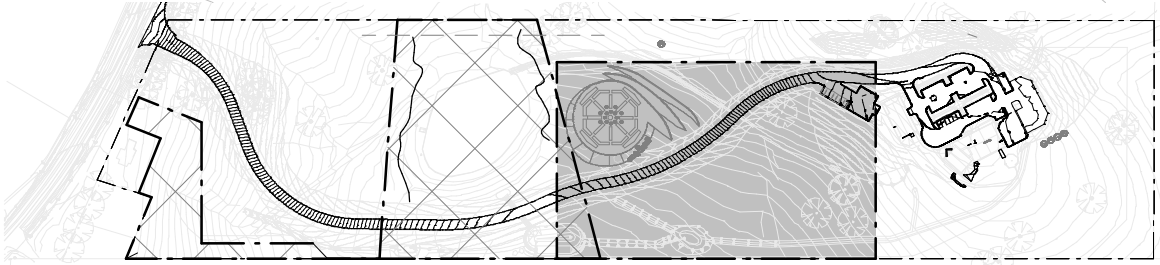
THIS PLANTING NOT IN CONTRACT - BY OWNER

BULK EARTHWORKS PLATFORMS AND SANDSTONE RETAINING WALLS ONLY IN CONTRACT - REFER DRAWING 580LA1 - SAVING OPTION IN CONTRACT - REFER SPECIFICATION

AVENUE PLANTING IN CONTRACT - SAVING OPTION IN CONTRACT - REFER SPECIFICATION

FOR LANDSCAPING PLANTING SCHEDULE REFER DRAWING 030GG1

KEY PLAN

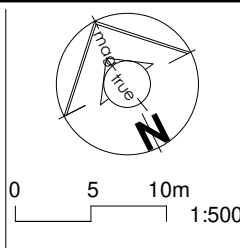


CONSTRUCTION SET

Issue	Date	Issue Description	Rev	Date	Revision Description



ARCHITECTS BLACK & WILSON Pty. Ltd.
 A.B.N. 28 069 941 868
 PH: (07) 3300 6610
 8 DESBET STREET, THE GAP, 4061
 www.architectsblackandwilson.com.au

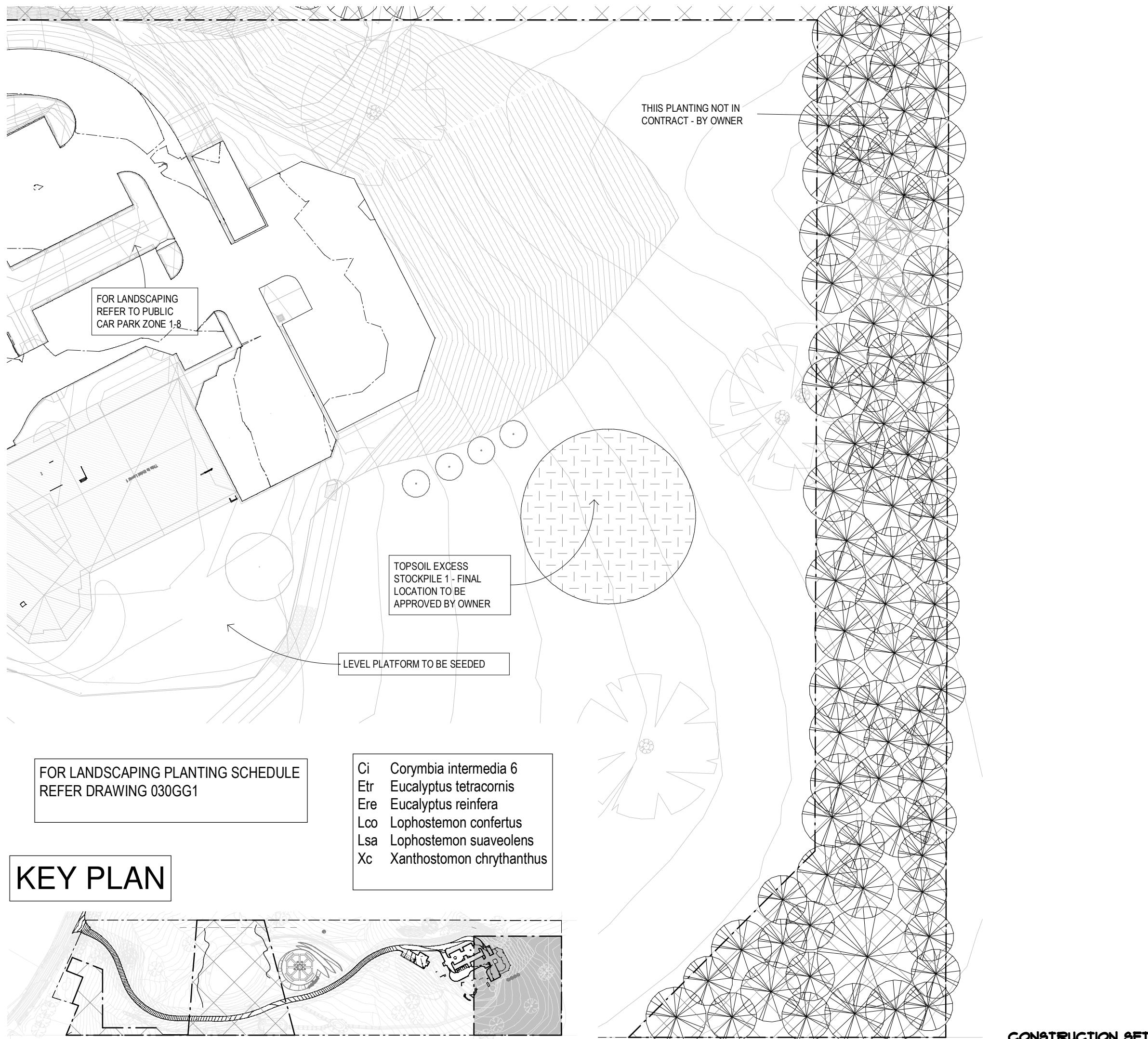


PROPOSED COMMUNITY PROJECT
 at 150 OCEANVIEW DRIVE SEASIDE
 for COMMUNITY PTY LTD

LANDSCAPE MIDDLE
 WORKING DRAWINGS

Scale at A3 AS INDICATED
 Designed MDW
 Drawn MDW
 Checked MDW

Job No #10122
 Dwg No 514LAI
 Issue WD32
 SHEET 9 OF 99



FOR LANDSCAPING REFER TO PUBLIC CAR PARK ZONE 1-8

THIS PLANTING NOT IN CONTRACT - BY OWNER

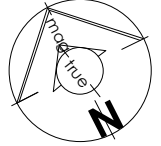
TOPSOIL EXCESS STOCKPILE 1 - FINAL LOCATION TO BE APPROVED BY OWNER

LEVEL PLATFORM TO BE SEEDED

FOR LANDSCAPING PLANTING SCHEDULE REFER DRAWING 030GG1

- Ci Corymbia intermedia 6
- Etr Eucalyptus tetracornis
- Ere Eucalyptus reinfera
- Lco Lophostemon confertus
- Lsa Lophostemon suaveolens
- Xc Xanthostomon chrythanthus

KEY PLAN



Issue Date Issue Description

Rev Date Revision Description

Scale at A3
A6
INDICATED
Designed
DESIGNER

Drawn
AUTHOR

Checked
CHECKER



ARCHITECTS BLACK & WILSON Pty. Ltd.
A.B.N. 28 069 941 868
PH: (07) 3300 6610
8 DESBET STREET, THE GAP, 4061
www.architectsblackandwilson.com.au

PROPOSED COMMUNITY PROJECT

at 150 OCEANVIEW DRIVE SEASIDE

for COMMUNITY PTY LTD

LANDSCAPE REAR SOUTH

WORKING DRAWINGS

CONSTRUCTION SET

Job No
#10122

Dwg No
515LA1

Issue
WD32

SHEET 91 OF 99